

Tool balancer, heavy-weight design



With the help of the REMA spring balancers, electric and pneumatic tools can be operated with minimal weight and positioned at the correct height.

Properties

- Aluminum body.
- Specially designed coil spring ensures a low-noise run.
- Adjustable load capacity (button).
- Carabiner attached.
- Extra safety suspension, for safety chain.
- Flexible stainless steel cable.
- Resistance-free and wear-resistant cable guide.
- Adjustable cable length.
- Insulated suspension system.
- Fixation at a point.
- Bearing conical drum, ensuring constant tension.
- Adjustable capacity through a screw.
- Fixation of the desired cable length in several places by separate remote control.
- Rotatable top hook with safety latch.

Applications

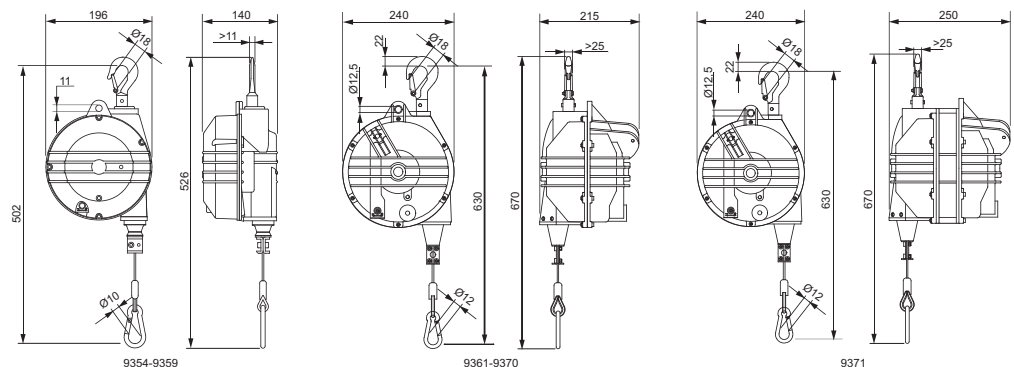
- For working with heavy electric and pneumatic tools, measuring equipment etc.

On request:

- Various spring balancers are also available in ATEX version. Ex II 2 GdC IIT 85 ° (T 6).

Norm:

- EN12100-1/2, DIN-EN15112



Type	WLL (kg)	Length (m)	Weight (kg)	ProductId
9354	4.0-7.0	2.0	5	0629354
9355	7.0-10.0	2.0	5.5	0629355
9356	10.0-14.0	2.0	5.5	0629356
9357	14.0- 18.0	2.0	6.5	0629357
9358	18.0- 22.0	2.0	6	0629358
9359	22.0- 25.0	2.0	6.6	0629359
9361*	10.0-15.0	2.0	10.3	0629361
9362*	15.0- 20.0	2.0	10.6	0629362
9363*	20.0- 25.0	2.0	11.2	0629363
9364*	25.0- 30.0	2.0	11.5	0629364
9365*	30.0- 35.0	2.0	11.8	0629365
9366*	35.0- 45.0	2.0	12.4	0629366
9367*	45.0- 55.0	2.0	12.5	0629367
9368*	55.0- 65.0	2.0	13.6	0629368
9369*	65.0- 75.0	2.0	14.5	0629369
9370*	75.0- 90.0	2.0	17.3	0629370
9371*	90.0-105.0	2.0	18	0629371

* Blocking device; the spring can be tensioned at any height, after mounting the tool.